

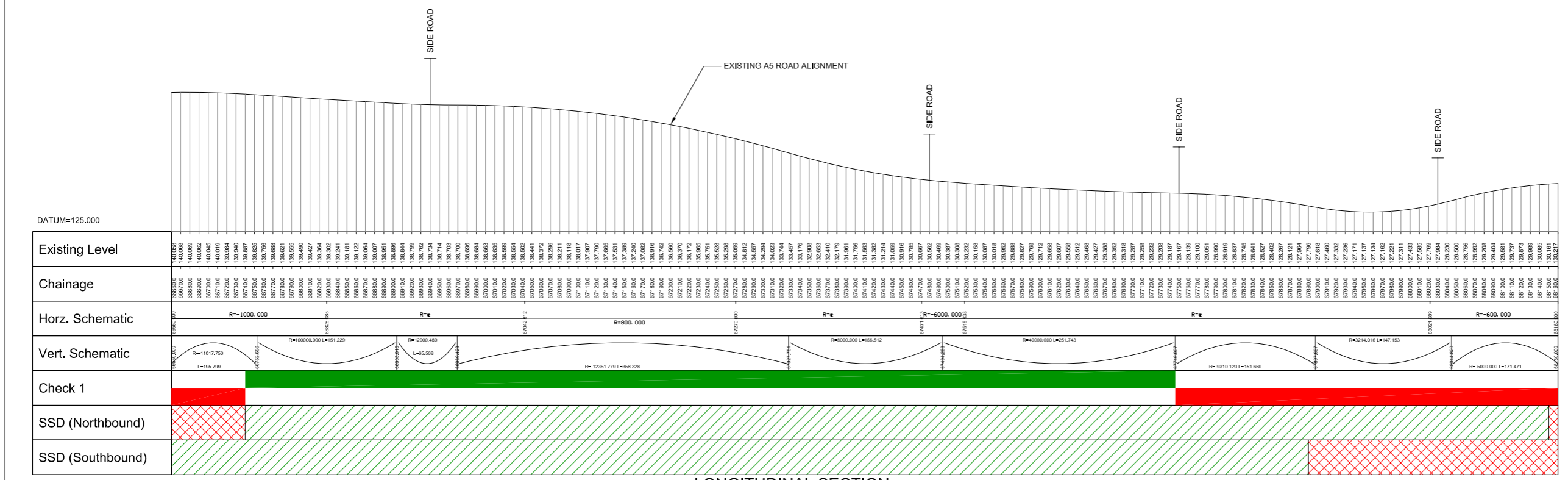
PLAN

- LEGEND**
- PRIVATE ACCESS
 - PUBLIC ACCESS
 - APPROXIMATE LOCATION OF EXISTING SPEED LIMIT SIGN POST
 - SPEED LIMIT SIGN

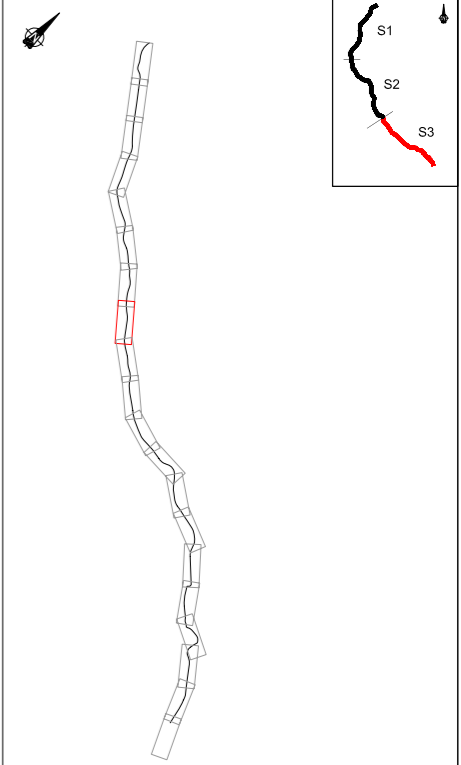
- UPPER HATCH (GREEN) - GEOMETRY IN ACCORDANCE WITH CURRENT DESIGN STANDARDS. LOWER HATCH (RED) - BASED ON CURRENT DESIGN STANDARDS, GEOMETRY WOULD REQUIRE DEPARTURES FROM STANDARDS.
- STOPPING SIGHT DISTANCE (SSD) ACHIEVES CURRENT DESIGN STANDARD
- STOPPING SIGHT DISTANCE (SSD) DOES NOT ACHIEVE CURRENT DESIGN STANDARDS

NOTES

CHECK 1 - COMBINED HORIZONTAL AND VERTICAL CHECK IN ACCORDANCE WITH TABLE 3, TD9 OF THE DESIGN MANUAL FOR ROADS AND BRIDGES.



LONGITUDINAL SECTION



KEY PLAN SECTION 3

VER	DATE	AMENDMENT / VERSION DESCRIPTION	APPROVAL	SCALES AT A1 SIZE DRAWING	DESIGNER	CLIENT	OSNI LICENCE	SECTION	PROJECT TITLE
B	16/10/2008	INTERNAL REVIEW AND ROAD SERVICE COMMENTS ADDED	RL	HORIZ. 1:2500 25 0 25 50 75 100 125 VERT. 1:250 2.5 0 2.5 5 7.5 10 12.5			REPRODUCED FROM ORDNANCE SURVEY OF NORTHERN IRELAND'S DATA WITH THE PERMISSION OF THE CONTROLLER OF HER MAJESTY'S STATIONERY OFFICE. © CROWN COPYRIGHT AND DATABASE RIGHTS NIMA ES&LA214, UNAUTHORISED REPRODUCTION INFRINGES © CROWN COPYRIGHT AND MAY LEAD TO PROSECUTION OR CIVIL PROCEEDINGS	SECTION 3	A5 WESTERN TRANSPORT CORRIDOR
A	10/09/2008	FIRST ISSUE	RL					DESIGNED BY VARIOUS	DRAWING TITLE EXISTING A5 ASSESSMENT
								DRAWN BY GJI	SHEET 46 OF 58
								CHECKED BY RL	
								SCALE AT A1 1:2500	PURPOSE OF ISSUE INFORMATION
									DRAWING No. 796036-0800-D-00046
									VERSION B