

PLAN

LEGEND

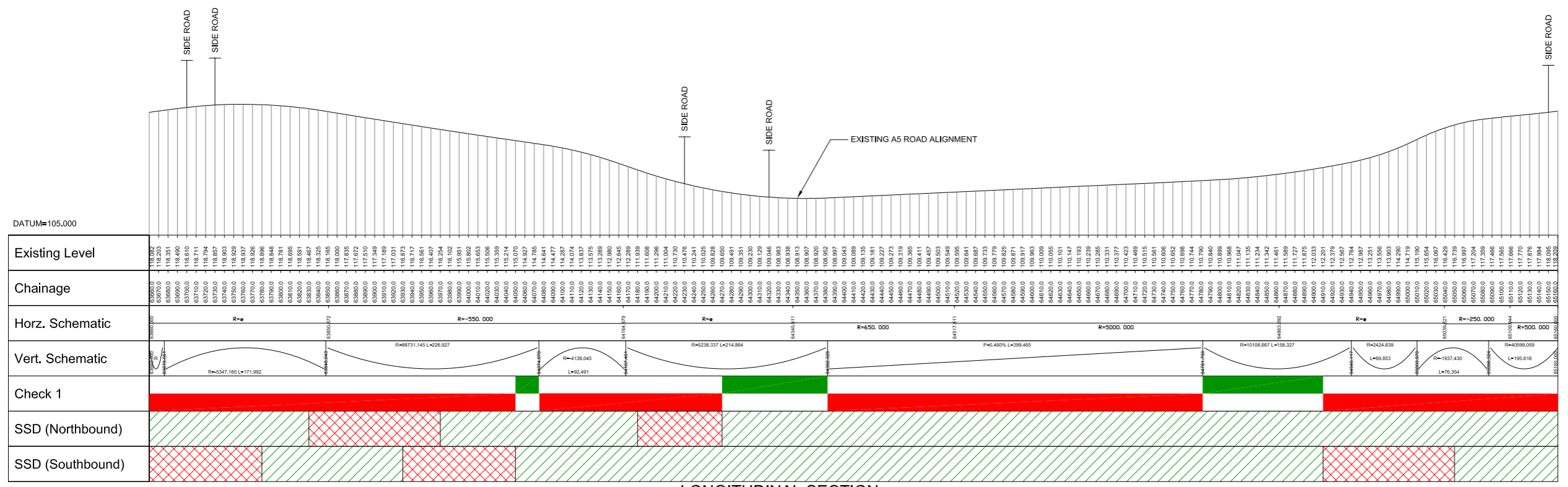
- PRIVATE ACCESS
- PUBLIC ACCESS
- APPROXIMATE LOCATION OF EXISTING SPEED LIMIT SIGN POST
- SPEED LIMIT SIGN
- UPPER HATCH (GREEN) - GEOMETRY IN ACCORDANCE WITH CURRENT DESIGN STANDARDS. LOWER HATCH (RED) - BASED ON CURRENT DESIGN STANDARDS, GEOMETRY WOULD REQUIRE DEPARTURES FROM STANDARDS.
- STOPPING SIGHT DISTANCE (SSD) ACHIEVES CURRENT DESIGN STANDARD
- STOPPING SIGHT DISTANCE (SSD) DOES NOT ACHIEVE CURRENT DESIGN STANDARDS

THIS SECTION OF THE A5 IS DERESTRICTED. THE ASSESSMENT HAS BEEN CARRIED OUT ON 60 MPH DESIGN SPEED

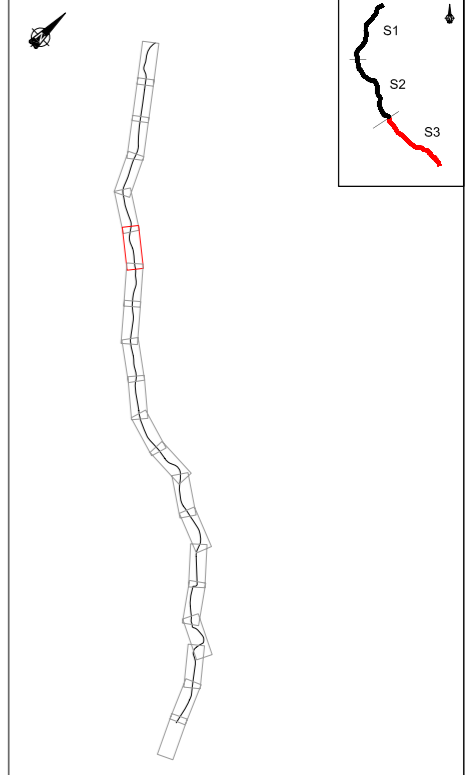
ADVISORY SPEED LIMIT 35 MPH

NOTES

CHECK 1 - COMBINED HORIZONTAL AND VERTICAL CHECK IN ACCORDANCE WITH TABLE 3, TD9 OF THE DESIGN MANUAL FOR ROADS AND BRIDGES.



LONGITUDINAL SECTION



KEY PLAN SECTION 3

VER	DATE	AMENDMENT / VERSION DESCRIPTION	APPROVAL	SCALES AT A1 SIZE DRAWING	DESIGNER	CLIENT	OSNI LICENCE	PROJECT TITLE		
B	16/10/2008	INTERNAL REVIEW AND ROAD SERVICE COMMENTS ADDED	RL	HORIZ. 1:2500 25 0 25 50 75 100 125 VERT. 1:250 2.5 0 2.5 5 7.5 10 12.5			REPRODUCED FROM ORDNANCE SURVEY OF NORTHERN IRELAND'S DATA WITH THE PERMISSION OF THE CONTROLLER OF HER MAJESTY'S STATIONERY OFFICE. © CROWN COPYRIGHT AND DATABASE RIGHTS NIMA ES&LA214, UNAUTHORISED REPRODUCTION INFRINGES © CROWN COPYRIGHT AND MAY LEAD TO PROSECUTION OR CIVIL PROCEEDINGS	A5 WESTERN TRANSPORT CORRIDOR		
A	10/09/2008	FIRST ISSUE	RL				SECTION 3 DESIGNED BY VARIOUS DRAWN BY GJI CHECKED BY RL	DRAWING TITLE EXISTING A5 ASSESSMENT SHEET 44 OF 58		
							SCALE AT A1 1:2500	PURPOSE OF ISSUE INFORMATION	DRAWING No. 796036-0800-D-00044	VERSION B