

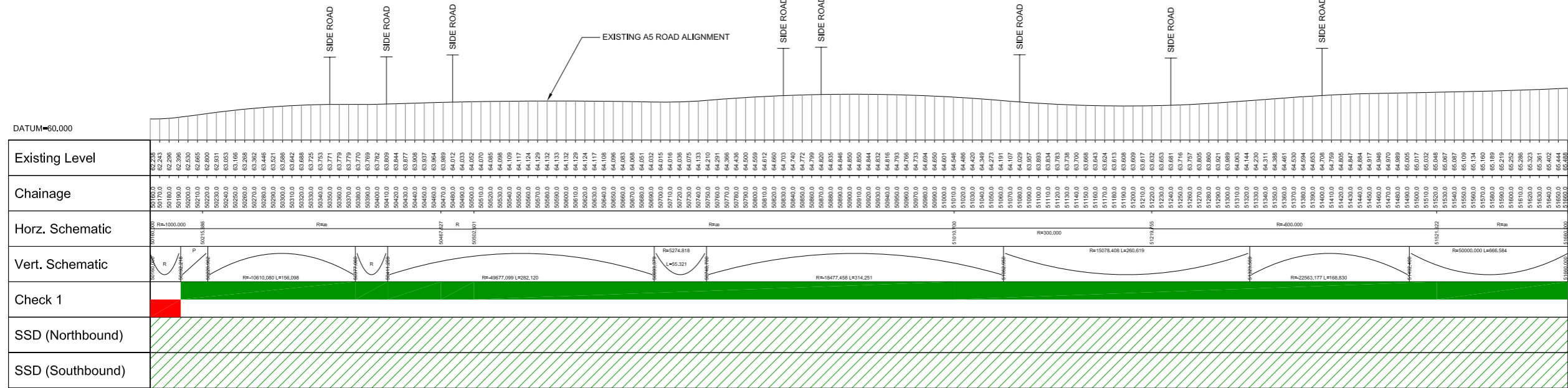
PLAN

LEGEND

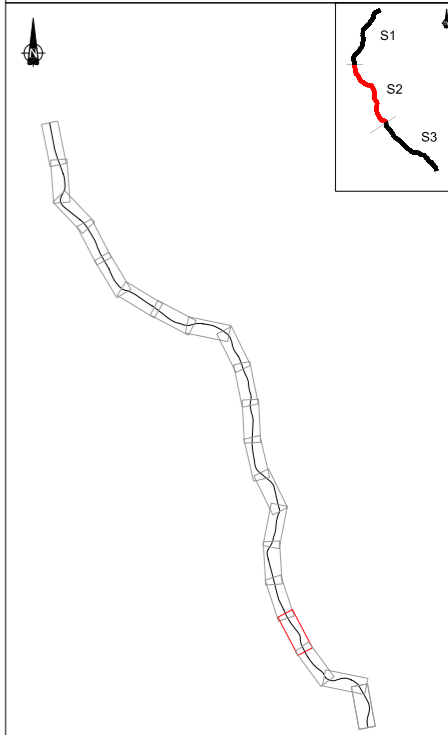
- PRIVATE ACCESS
- PUBLIC ACCESS
- APPROXIMATE LOCATION OF EXISTING SPEED LIMIT SIGN POST
- SPEED LIMIT SIGN
- UPPER HATCH (GREEN) - GEOMETRY IN ACCORDANCE WITH CURRENT DESIGN STANDARDS. LOWER HATCH (RED) - BASED ON CURRENT DESIGN STANDARDS, GEOMETRY WOULD REQUIRE DEPARTURES FROM STANDARDS.
- STOPPING SIGHT DISTANCE (SSD) ACHIEVES CURRENT DESIGN STANDARDS
- STOPPING SIGHT DISTANCE (SSD) DOES NOT ACHIEVE CURRENT DESIGN STANDARDS

NOTES

CHECK 1 - COMBINED HORIZONTAL AND VERTICAL CHECK IN ACCORDANCE WITH TABLE 3, TD9 OF THE DESIGN MANUAL FOR ROADS AND BRIDGES.



LONGITUDINAL SECTION



KEY PLAN SECTION 2

VER	DATE	AMENDMENT / VERSION DESCRIPTION	APPROVAL	SCALES AT A1 SIZE DRAWING	DESIGNER	CLIENT	OSNI LICENCE REPRODUCED FROM ORDNANCE SURVEY OF NORTHERN IRELAND'S DATA WITH THE PERMISSION OF THE CONTROLLER OF HER MAJESTY'S STATIONERY OFFICE. © CROWN COPYRIGHT AND DATABASE RIGHTS NIMA ES&LA214, UNAUTHORISED REPRODUCTION OFFENCES © CROWN COPYRIGHT AND MAY LEAD TO PROSECUTION OR CIVIL PROCEEDINGS	SECTION 2 SECTION 2 DESIGNED BY VARIOUS DRAWN BY GJI CHECKED BY KBC SCALE AT A1 1:2500	PROJECT TITLE A5 WESTERN TRANSPORT CORRIDOR DRAWING TITLE EXISTING A5 ASSESSMENT SHEET 35 OF 58	PURPOSE OF ISSUE INFORMATION	DRAWING No. 796036-0800-D-00035	VERSION B
B A	16/10/2008 08/09/2008	INTERNAL REVIEW AND ROADS SERVICE COMMENTS ADDED FIRST ISSUE	KBC KBC	HORIZ. 1:2500 VERT. 1:250	mouchel	ROADS Service A5 WTC Western Transport Corridor						