

Curraghinalt Project, County Tyrone, Northern Ireland

Prepared for Dalradian Gold Limited

Guide to the Planning Application
Second Addendum
October 2020

Turley

Contents

1.	Introduction	1
2.	Form and Content of the Further Submission	2
3.	Project Background	4
4.	The Curraghinalt Project	5
5.	Planning Policy	6
6.	Design	7
7.	Economic Impact	10
8.	Environmental Impact Assessment	11
9.	Other Consenting Regimes	16
10.	Next Steps in Planning	17
	Appendix 1: Drawing Schedule	18

Client

Dalradian Gold Limited

Our reference

DALB3001

October 2020

1. Introduction

- 1.1 This 'Guide to the Application' Second Addendum submitted in support of the planning application (ref: LA10/2017/1249/F) been prepared on behalf of Dalradian Gold Limited ('DGL' or 'the applicant').
- 1.2 Following the 2017 planning application, DGL reviewed the project design, taking into account feedback during the planning application process, which resulted in a number of revisions to the detailed project description assessed in the Environmental Statement (ES). These are set out in paragraph 1.2 of the 2019 Guide to the Application.
- 1.3 Further feedback from statutory consultees in 2020 resulted in modifications to the shape of the Design Stack Facility as described in Chapter 6. Since July 2019 further minor changes have also been made to:
 - The site access roads and associated junctions;
 - The dimensions of the Northern Ireland Electricity Networks (NIE) electrical substation; and
 - The route of the powerline and the associated assessment information.
- 1.4 There are no changes to the overarching project parameters since the update provided in July 2019.
- 1.5 Other minor changes are described in Chapter 6.

2. Form and Content of the Further Submission

Forms and Drawings

- 2.1 There have been no revisions to the P1 Application Form and the P1b Form.
- 2.2 The amendments to the scheme have resulted in revisions to some of the previously submitted drawings and the provision of some additional drawings. An updated drawing schedule is enclosed at Appendix 1.

Reports

- 2.3 There have been no revisions or updates to the Pre-Application Community Consultation Report or the Design and Access Statement.

Environmental Statement

- 2.4 In a letter dated 15 September 2020, the Department for Infrastructure (DfI) stated that Further Environmental Information (FEI) is required to be submitted under Regulation 23 of the Planning (Environmental Impact Assessment) Regulations (Northern Ireland) 2015.
- 2.5 In response to the FEI request a Second Addendum the Environmental Statement has been prepared and addresses the FEI requests received in the letter dated 15 September 2020 from the DfI. The Second Addendum to the ES also includes further information that is provided on a voluntary basis to assist the DfI but does not form part of the FEI request. The findings of supplementary assessments that have been undertaken to provide more detail and define any changes to impacts from the 2019 and 2020 design updates.

Further Supporting Information

- 2.6 The following other reports, which were submitted in support of the planning application to assist DfI's determination of the planning application, either remain unchanged or have been updated.
- Planning Statement – no change;
 - Statement of Economic Impacts (2017) and Addendum to the Socio Economic Impact Assessment and Economic Impact (see ES Addendum Volume 3, Appendix C12+13) – no change;
 - Transport Assessment (2017), Transport Assessment Addendum (see ES Addendum Volume 3, Appendix C22) and Appendix E8e and Appendix E8c of the Second ES Addendum;
 - Travel Plan – no change;

- Shadow Habitat Regulations Assessment – see updated Shadow Habitats Regulations Assessment (July 2019) (ES Addendum Volume 3, Appendix C10) and updated Shadow Habitats Regulations Assessment (October 2020) (Second ES Addendum Volume 3, Appendix C10); and
- Mine Waste Management Plan – replaced with the updated Mine Waste Management Plan (October 2020) (see Second ES Addendum Volume 3, Appendix B3 and stand-alone copy).

2.7 Changes made to the Mine Waste Management Plan appendices are identified below.

	Status	Change Made
Legend to table below		Unchanged
	A	Updated via an addendum to the technical report
	R	Replaced by an update document which supersedes the previous version
	N	New document included in this report for the first time
	Removed	No longer relevant so removed

Table 2.1: Status of the Appendices to the Mine Waste Management Plan

Ref	Mine Waste Management Plan Appendices	Changes	
		MWMP	MWMP
		2019	2020
Appendix A	Geology Report		
Appendix B	Paste Backfill Report	R	
Appendix C	Geochemistry Characterisation Report	A	R
Appendix D	NI DOE Planning Unit Questionnaires	R	
Appendix E	Peat Management Plan	R	
Appendix F	Peat Landslide Hazard Risk Assessment	R	
Appendix G	Mine Waste Facility Technical Design Report	A	A
Appendix H	Conceptual Closure Plan	R	
Appendix I	Groundwater Impact Assessment		R
Appendix J	Surface Water Impact Assessment		R
Appendix K	Draft Surface Water and Groundwater Monitoring Plan	N	R

3. Project Background

3.1 No change – refer to the Guide to the Application (November 2017)

4. The Curraghinalt Project

For detailed information on the proposed development refer to Appendix E9 of the Second Addendum (Project Description), the Second Addendum to the Environmental Statement (Volume 2, October 2020) the Addendum to the Environmental Statement (Volume 2, July 2019) and the Planning Drawings (2017, 2019 and 2020)

Description of Development

- 4.1 There are no amendments to the description of development therefore the description remains as per the 2019 P1 form.

5. Planning Policy

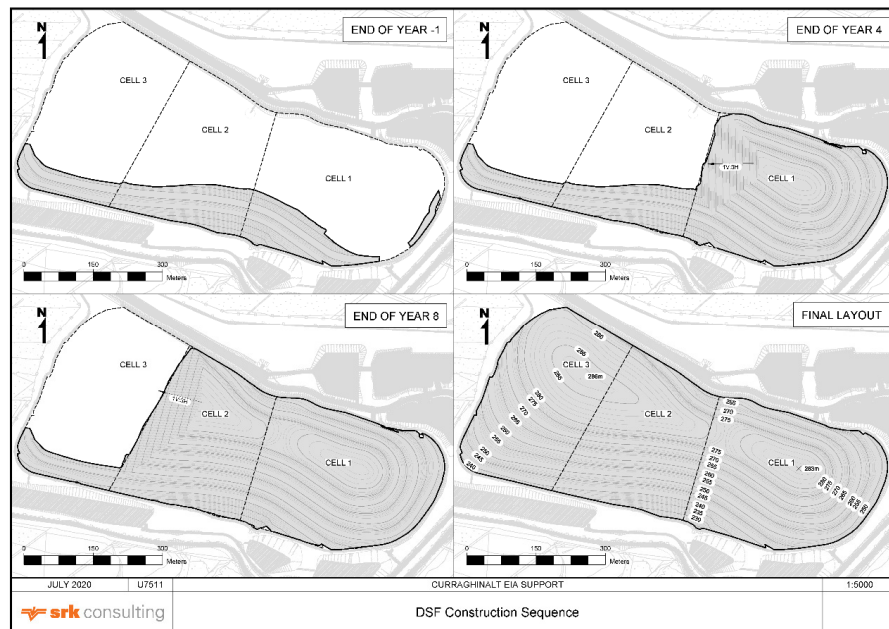
5.1 No change – refer to the Guide to the Application (November 2017).

6. Design

Dry Stack Storage Facility

- 6.1 The main change since the 2019 submission has been the adjustments to the DSF design.
- Refinement of the shape to blend with surrounding landforms including a slight shift northward and steepening of the slope on the north side of the DSF to maintain the storage capacity of 4.8Mm³;
 - Improvement of underdrainage;
 - Provision of more detail on the engineered cover design for the DSF (vegetated soil overlying bentonite-amended soil layer on external slopes).
- 6.2 Improvements to the internal DSF drainage are described Section 2.2 of the Second Addendum to the ES.
- 6.3 As shown in Figure 6.1, The DSF is designed as three cells, enabling each cell to be closed, restored and revegetated sequentially. The starter berm will effectively form the front (south) face of these cells, and will be in place, and planted before cell one (the easternmost cell) is used. Operations and machinery to the north of the starter berm will therefore be partly screened by this landform and vegetation.

Figure 6.1: DSF development sequence showing the starter berm and revised shape



- 6.4 The lower layers of the south, east and north slopes of each cell will be soiled and revegetated, as the DSF grows. The west face of cell one will not be covered and planted as cell two abuts this face. This is the same for the west face of cell two which will be abutted by cell three. All other outward facing slopes will however be restored

in a progressive manner, with the aim being to minimise the visible extent of crushed rock at any one time.

- 6.5 The lines of the current field pattern will be extended up the lower slopes, with the planting of shrubs as an informal hedgerow. The upper slopes will be retained as open heath and grassland as is characteristic of upper slopes in the wider landscape. Ongoing landscape and ecological management will be required post closure, but gradually, over time, the intention is that the DSF, and all disturbed areas, are returned to a naturalistic landcover.

Roads, Traffic and Transport

- 6.6 As a result of discussions with DfI Roads and associated road safety audits, a number of changes have been made to the proposed roads required for the implementation of the project. The proposed changes are described in more detail in Appendix E8 a-e. The changes relate to road safety signage, minor amendments to road widths in specific areas and changes to road intersections. These are all associated with the proposed infrastructure site. None of the changes make any material difference to the assessed impacts.

General Infrastructure

- 6.7 There are minor adjustments to installations at the proposed infrastructure site. The changes are:
- On the processing plant infrastructure pad, the size of the electrical substation has been increased - (see drawing - Electrical Rooms_S31 Rev B).
 - The elevation of the conveyor ramp at the covered ROM stockpile area has been altered to address a minor discrepancy in levels.
 - The DSF drain collecting the over liner drainage is now detailed on the General Site Layout Plan (2016021-P-CIV-004 (A) General Site Layout Plan Sheet 1 of 2 Rev FEI_2).
 - The temporary explosive magazine located at the portal has been increased in size and the location adjusted on the associated laydown area to facilitate double fencing.
 - A roof has been included over the Water Treatment Plant enclosure (see drawing Water Treatment Plant Plan and Isometric View – S24_Rev A) and the lighting arrangements (see Appendix B11) changed to take this modification into account.
 - The lighting scheme for the proposed infrastructure site has been reviewed and a number of lights have been removed, relocated or reduced in height to further minimise the impacts of lighting during the hours of darkness. A revised Lighting Specification report is included as Appendix B11.
 - Since the submission of FEI 1, the number of discharge points has been reviewed and rationalised. As a result, the number of discharge points has been reduced from 11 to 8. This change is reflected in the Schedule 6 applications and shown

on planning drawing (Schedule 6 Location Plan_FEI 2 - 2016021-I-CIV-610).
Changes in flows are reflected in the 2020 Surface Water Impact Assessment
included as Appendix C4 to the Second ES Addendum.

7. Economic Impact

7.1 For further information refer to the following documents.

- Appendix C13 - Statement of Economic Impacts (ES Volume 3, November 2017)
- Appendix C12 and C13 - Addendum to the Socio-Economic Impact Assessment and The Statement of Economic Impacts (ES Addendum Volume 3, July 2019)
- Appendix D5 - the response to the Department for Infrastructure (Economics Branch) (ES Addendum Volume 3, July 2019)

8. Environmental Impact Assessment

For further information refer to the Environment Statement (November 2017), the Addendum to the Environmental Statement (July 2019) and the Second Addendum to the Environmental Statement (October 2020) prepared by SRK

- 8.1 The 2017 ES comprised three parts; the non-technical summary, the main report and the appendices. The status of revisions to the ES following the first and second addenda is as follows.
- The non-technical summary (NTS) and main report have not been revised or replaced, however, the content has been superseded in places by information provided in the First Addendum to the ES (2019 ES addendum) and Second Addendum to the ES (2020 ES addendum) and the Non-Technical Summary for the first Addendum (2019) and the Non-Technical Summary for second Addendum (2020) .
 - Chapter 4 of the main report is superseded by Appendix E9 (2020 ES addendum) to provide an updated Project Description.
 - With the exception of Chapter 4 noted above, the remaining chapters of the main report have not been revised or replaced, however the content of these documents has been updated via information presented in the 2019 ES addendum and this second ES addendum (2020) – see Table 8.1.
 - Some appendices to the 2017 ES have been revised and replaced – see Table 8.2.
 - The inclusion of specific management plans and measures as detailed in Section 4 of the 2020 ES addendum.
- 8.2 There are no material changes to the residual impact ratings or conclusions stated in the 2017 ES following the 2019 or 2020 ES addenda. This is explained in Section **Error! Reference source not found.** of the 2020 ES addendum.
- Environmental Statement main report**
- 8.3 The content of Chapter 8 (Impact Assessment) and Chapter 10 (Environmental and Social Management Plan) have been superseded in places by information provided in the 2019 and 2020 ES Addenda.
- 8.4 The affected sections of the impact assessment chapter are identified in **Table 8.1** where ‘A’ indicates ‘amendments’ have occurred in either 2019 or 2020.

Table 8.1: Impact topics amended by first addendum (2019) and second addendum (2020) to the ES

Ref	Chapter 8 Impact Assessment Sections	Changes	
		2019 Addendum	2020 Addendum
8.2	Landscape and visual	A	A
8.3	Surface water		A
8.4	Groundwater		A
8.5	Traffic and transport	A	A
8.6	Air quality and dust	A	A
8.7	Noise	A	
8.8	Vibration	A	
8.9	Subsidence and seismicity	A	
8.10	Radon gas and NORM	A	
8.11	Ecology	A	
8.12	Cultural heritage		
8.13	Socio-economic	A	
8.14	Health	A	
8.15	Power line		A

Environmental Statement appendices

8.5 Changes made to the appendices to the 2017 ES and appendices added to the 2019 ES Addendum are identified in Table 8.2 and those highlighted below are contained in Volume 3 of the Second Addendum.

Table 8.2: Status of appendices to the ES

Status	Change Made
	Unchanged from the document submitted with the 2017 ES
A	Updated via an addendum to the technical report
R	Replaced by an update document which supersedes the previous version
N	New document included in this report for the first time
Removed	No longer relevant so removed

Ref	Environmental Statement Appendices	Changes	
		1 st Addendum	2 nd Addendum
		2019	2020
A Stakeholder Engagement Documents			
A1	Scoping Report for the Curraghinalt EIA Process		
A2	Response to request for formal scoping opinion		
A3	Pre-Application Community Consultation (PACC) Report		
B Engineering and Management Reports			
B1	Mine Design Parameter Statement and Drawings	R	
B2	Outline Construction Environmental Management Plan	R	
B3	Mine Waste Management Plan	R	R
B4	Travel Plan		
B5	Conceptual Rehabilitation and Closure Plan		¹
B6	Draft Cyanide Management Plan ²	Removed	Removed
B7	Peat Landslide Hazard and Risk Assessment	R	
B8	Peat Management Plan	R	
B9	Geochemical Characterisation Report	A	R
B10	Flood Risk and Drainage Assessment		
B11	Lighting Specifications	R	R
B12	Design Drawings	A	R
C Specialist Reports			
C1	Soils and Geology Baseline Report		
C3	Climate Baseline Report		
C4	Surface Water Baseline Report	A	R
C5	Surface Water Impact Assessment		R
C6	Groundwater Baseline Report	A	³
C7	Groundwater Impact Assessment		R
C8	Radon and NORM Emissions Impact Assessment	A	

¹ The Landscape and Restoration Plan figure (Appendix C17 has been replaced)

² As cyanide was removed from the process this plan was removed as no longer relevant

³ The 2019 baseline monitoring report is appended to the updated groundwater impact assessment (Appendix C6)

Ref	Environmental Statement Appendices	Changes	
		1 st Addendum	2 nd Addendum
		2019	2020
C9	Ecological Impact Assessment (with annexed baseline reports)	A	
C10	Ecological Mitigation and Management Plan	A	
C11	Shadow Habitat Regulations Assessment	R	A
C12	Socio-economic Baseline Report		
C13	Socio-economic Impact Assessment	A	
C14	Statement of Economic Benefits	A	
C15	Health Impact Assessment	A	
C16	Cultural Heritage Impact Assessment		
C17	Landscape and Landscape Restoration Plans	A	R ⁴
C18	Noise Impact Assessment (with annexed baseline report)	R	
C19	Air Quality Impact Assessment (with annexed baseline report)	A	A
C20	Vibration Impact Assessment	A	
C21	Subsidence	R	
C22	Transport Assessment	A	A ⁵
C23	Power line Specialist Study Reports	A	R
D Supplementary reports submitted as part of 2019 ES addendum			
D1	FEI Request from the Department for Infrastructure (January 2019)	N	
D2	Draft Surface Water and Groundwater Monitoring Plan	N	R
D3	Ground and Surface Water Model Files	N	R
D4	Private Water Supply Details	N	
D5	Response to the Department for Infrastructure (Economics Branch)	N	
D6	Emergency Preparedness and Response Protocol	N	
E Supplementary reports submitted as part of 2020 ES addendum			
E1	Second Further Information Request from DFI Planning (September 2020)		N
E2	Clarification note - DAERA Water Management Unit		N

⁴ The existing infrastructure site restoration plan has not been replaced, only that for the proposed infrastructure site

⁵ Refer to Appendix E8a, E8b, E8c, E8d and E8e

Ref	Environmental Statement Appendices	Changes	
		1 st Addendum	2 nd Addendum
		2019	2020
E3	Clarification note - NI Water		N
E4	Clarification note - DAERA (Land and Groundwater)		N
E5	Clarification note - Public Health Agency		N
E6	Information provided to DFI Consultant		N
E7	Sandvik equipment technical note		N
E8a	Correspondence with DFI Roads		N
E8b	Road Restraint System Risk Assessment		N
E8c	Road Safety Audit		N
E8d	Speed Survey		N
E8e	Scheme Design Overviews		N
E9	Project Description Update (October 2020)		N ⁶

Changes between 2019 and 2020 Update

- 8.6 The changes to the design will change aspects of the project that could have environmental impacts. The aspects that have been changed are identified in Table 8.3 and the nature of the expected change is neutral.

Table 8.3: Changes between 2019 Update and 2020 Update that could have Environmental Impacts

Design Change	Aspect Change	Expected nature of the change (positive/negative/neutral or uncertain)
Change in shape of DSF	Altered shape and profile of DSF within landscape	Neutral – aesthetic improvement to the form of the DSF in landscape and visual terms, which will not alter the magnitude of change or the level of effect.
Additional contour drains above and below liner in DSF	No material change to drainage design but additional features result in minor variations in DSF water balance	Neutral – similar overall volumes of water reporting to the underdrains
Minor amendments to road network	Improved visibility between passing bays and at junctions	Neutral – improved road safety but no change expected to traffic impacts

⁶ This replaces Chapter 4 of the 2017 ES

9. Other Consenting Regimes

- 9.1 Following the removal of the CIL process and associated reagents, the Pollution Prevention and Control (PPC) and the Hazardous Substances Consent applications have been withdrawn.
- 9.2 Other all consents set out in Appendix 5 of the Guide to the Application (November 2017) remain.

10. Next Steps in Planning

10.1 The next steps for Dfl in the planning process are as follows:

- Advertisement of receipt of the further information and availability of the information for review and representations;
- Re-neighbour notification; and
- Re-consultation with statutory and non-statutory consultees.

Appendix 1: Drawing Schedule

Curraghinalt Project

Updated Drawing Schedule

October 2020

Curraghinalt Project Updated Drawing Schedule

Note: Appendix B12 – electronic copies to scale. Hard copies (not to scale). Hard copies (to scale) of all drawings accompany the planning submission.

Table 1.1 Planning Application Drawings (Teague & Sally)

Drawing Title	Drawing Ref	2017 Submission	2019 FEI Submission	2020 FEI2 Submission
Processing – Overall General Arrangement	C3515 - S01	C3515 - S01	C3515 - S01 Rev A	C3515 - S01 Rev B
Crusher Plan & Section	C3515 - S02	C3515 - S02	Removed	n/a
Crusher Elevations	C3515 - S03	C3515 - S03	Removed	n/a
Stockpile Plan & Section	C3515 - S04	C3515 - S04	No change	C3515 - S04 Rev A
Stockpile Elevations	C3515 - S05	C3515 - S05	No change	C3515 - S05 Rev A
Processing Plant - Plan Sheet 1	C3515 - S06	C3515 - S06	C3515 - S06 Rev A	No change
Processing Plant - Plan Sheet 2	C3515 - S07	C3515 - S07	Removed	n/a
Processing Plant - Section Sheet 1	C3515 - S08	C3515 - S08	C3515 - S08 Rev A	No change
Processing Plant - Section Sheet 2	C3515 - S09	C3515 - S09	C3515 - S09 Rev A	No change
Processing Plant - Section Sheet 3	C3515 - S10	C3515 - S10	C3515 - S10 Rev A	C3515 - S10 Rev B
Processing Plant - Section Sheet 4	C3515 - S11	C3515 - S11	C3515 - S11 Rev A	C3515 - S11 Rev B
Processing Plant - Section Sheet 5	C3515 - S12	C3515 - S12	C3515 - S12 Rev A	C3515 - S12 Rev B
Processing Plant - Section Sheet 6	C3515 - S13	C3515 - S13	Removed	n/a
Processing Plant - Section Sheet 7	C3515 - S14	C3515 - S14	Removed	n/a
Processing Plant - Elevation Sheet 1	C3515 - S15	C3515 - S15	C3515 - S15 Rev A	C3515 - S15 Rev B
Processing Plant - Elevation Sheet 2	C3515 - S16	C3515 - S16	C3515 - S16 Rev A	C3515 - S16 Rev B
Processing Plant - Elevation Sheet 3	C3515 - S17	C3515 - S17	C3515 - S17 Rev A	C3515 - S17 Rev B

Drawing Title	Drawing Ref	2017 Submission	2019 FEI Submission	2020 FEI2 Submission
Truck Shop Ground Floor Plan	C3515 - S18	C3515 - S18	No change	No change
Truck Shop First Floor Plan	C3515 - S19	C3515 - S19	No change	No change
Truck Shop Elevations	C3515 - S20	C3515 - S20	No change	No change
Truck Shop Sections	C3515 - S21	C3515 - S21	No change	C3515 - S21 Rev A
Warehouse Plan, Section, Elevations	C3515 - S22	C3515 - S22	No change	C3515 - S22 Rev A
Mine Rescue Plan, Section, Elevations	C3515 - S23	C3515 - S23	No change	C3515 - S23 Rev A
Water Treatment Plant Plan	C3515 - S24	C3515 - S24	No change	C3515 - S24 Rev A
Water Treatment Plant Elevations	C3515 - S25	C3515 - S25	No change	C3515 - S25 Rev A
Portal General Arrangement	C3515 - S26	C3515 - S26	C3515 - S26 Rev A	No change
Admin and Dry Building	C3515 - S27	C3515 - S27	No change	C3515 - S27 Rev A
Assay Lab	C3515 - S28	C3515 - S28	No change	C3515 - S28 Rev A
Vent Collar General Arrangement	C3515 - S29	C3515 - S29	No change	No change
Transformers	C3515 - S30	C3515 - S30	No change	No change
Electrical Rooms	C3515 - S31	C3515 - S31	C3515 - S31 Rev A	C3515 - S31 Rev B
Bat House	C3515 - S32	C3515 - S32	No change	No change
Security Fencing	C3515 - S33	C3515 - S33	C3515 - S33 Rev A	C3515 - S33 Rev B
Conveyor Transfer Towers General Arrangement	C3515 - S34	n/a	C3515 - S34 <i>New drawing</i>	No change
Conveyor Transfer Towers Plans	C3515 - S35	n/a	C3515 - S35 <i>New drawing</i>	C3515 - S35 Rev A
Sewage Treatment Plant	C3515 - S36	n/a	C3515 - S36 <i>New drawing</i>	No change
Temporary Explosive Store (max 24 months)	C3515 - S37	n/a	C3515 - S37 <i>New drawing</i>	No change

Table 1.2 Planning Application Drawings (Hoy Dorman)

Drawing Title	Drawing Ref	2017 Submission	2019 FEI Submission	2020 FEI2 Submission
Site Location Plan	2016021-P-CIV-001	2016021-P-CIV-001	No change	No change
Regional Site Location	2016021-	2016021-P-CIV-001A	No change	No change

Drawing Title	Drawing Ref	2017 Submission	2019 FEI Submission	2020 FEI2 Submission
Plan	P-CIV-001A			
Site Location Plan including Extraction and Exploration Areas	2016021-P-CIV-001B	2016021-P-CIV-001B	No change	No change
Existing Site Plan	2016021-P-CIV-002	2016021-P-CIV-002	No change	2016021-P-CIV-002_FEI2
Site Location Plan Illustrating Proposed Developments/Working Areas	2016021-P-CIV-003	2016021-P-CIV-003	2016021-P-CIV-003 Rev A	2016021-P-CIV-003_FEI2
<i>General Site Layout Plan</i>	<i>2016021-P-CIV-004</i>	<i>2016021-P-CIV-004</i>	<i>n/a Replaced by 2016021-P-CIV-004(A) and 2016021-P-CIV-004(B)</i>	<i>n/a Replaced by 2016021-P-CIV-004(A) and 2016021-P-CIV-004(B)</i>
General Site Layout Plan Sheet 1 of 2	2016021-P-CIV-004(A)	2016021-P-CIV-004(A)	2016021-P-CIV-004(A) Rev A	2016021-P-CIV-004(A)_FEI2
General Site Layout Plan Sheet 2 of 2	2016021-P-CIV-004(B)	2016021-P-CIV-004(B)	2016021-P-CIV-004(B) Rev A	2016021-P-CIV-004(B)_FEI2
Proposed Site Cross Section Plan	2016021-P-CIV-005	2016021-P-CIV-005	2016021-P-CIV-005 Rev A	2016021-P-CIV-005_FEI2
Proposed Site Cross Sections A & B	2016021-P-CIV-006	2016021-P-CIV-006	2016021-P-CIV-006 Rev A	2016021-P-CIV-006_FEI2
Proposed Site Cross Sections C & D	2016021-P-CIV-007	2016021-P-CIV-007	2016021-P-CIV-007 Rev A	2016021-P-CIV-007_FEI2
Proposed Site Cross Sections E & F	2016021-P-CIV-008	2016021-P-CIV-008	2016021-P-CIV-008 Rev A	2016021-P-CIV-008_FEI2
Proposed Site Cross Section G, H, I, J & K	2016021-P-CIV-009	2016021-P-CIV-009	2016021-P-CIV-009 Rev A	2016021-P-CIV-009_FEI2 <i>renamed</i>
<i>Proposed Site Cross Section H</i>	<i>2016021-P-CIV-010</i>	<i>2016021-P-CIV-010</i>	<i>2016021-P-CIV-010 Rev A</i>	<i>n/a Removed – Section H now included as part of 2016021-P-CIV-009_FEI2</i>
<i>Proposed Site Cross Sections I, J & K</i>	<i>2016021-P-CIV-011</i>	<i>2016021-P-CIV-011</i>	<i>2016021-P-CIV-011 Rev A</i>	<i>n/a Removed – Section I, J & K now included as part of 2016021-P-CIV-009_FEI2</i>
1000 L Fuelstore – Dispensing Equipment	2016021-P-CIV-012	2016021-P-CIV-012	No change	No change
27,500 L Fuelstore – Dispensing Equipment	2016021-P-CIV-013	2016021-P-CIV-013	No change	No change
Mine Vent Raise Proposed Locations	2016021-P-CIV-020	n/a	2016021-P-CIV-020 <i>New drawing</i>	No change

Drawing Title	Drawing Ref	2017 Submission	2019 FEI Submission	2020 FEI2 Submission
Proposed Layout Plan	2016021-P-CIV-100	2016021-P-CIV-100	2016021-P-CIV-100 Rev A	2016021-P-CIV-100_FEI2
Proposed Junction Details Right Turn Lane	2016021-P-CIV-101	2016021-P-CIV-101	2016021-P-CIV-101 Rev A (<i>also renamed</i>)	2016021-P-CIV-101_FEI2
Proposed Site Access Junction Details	2016021-P-CIV-102	2016021-P-CIV-102	No change	No change
Proposed Site Access Junction Details	2016021-P-CIV-103	2016021-P-CIV-103	No change	No change
Proposed New Road Plan & Profile (CH0-CH470)	2016021-P-CIV-104	2016021-P-CIV-104	2016021-P-CIV-104 Rev A (<i>renamed</i>)	2016021-P-CIV-104_FEI2
Proposed New Road Plan & Profile (CH470-CH920)	2016021-P-CIV-105	2016021-P-CIV-105	2016021-P-CIV-105 Rev A (<i>renamed</i>)	2016021-P-CIV-105_FEI2
Proposed New Road Plan & Profile (CH920-CH1385)	2016021-P-CIV-106	2016021-P-CIV-106	2016021-P-CIV-106 Rev A (<i>renamed</i>)	2016021-P-CIV-106_FEI2
Proposed Haul Road Plan & Profile (CH0-CH430)	2016021-P-CIV-107	2016021-P-CIV-107	2016021-P-CIV-107 Rev A (<i>renamed</i>)	2016021-P-CIV-107_FEI2
Proposed Haul Road Plan & Profile (CH4300-CH860)	2016021-P-CIV-108	2016021-P-CIV-108	2016021-P-CIV-107 Rev A (<i>renamed</i>)	2016021-P-CIV-108_FEI2
Proposed Haul Road Plan & Profile (CH860-CH1216)	2016021-P-CIV-109	2016021-P-CIV-109	2016021-P-CIV-109 Rev A	2016021-P-CIV-109_FEI2
Proposed Site Access Road Plan & Profile (CH0-CH420)	2016021-P-CIV-110	2016021-P-CIV-110	2016021-P-CIV-110 Rev A	2016021-P-CIV-110_FEI2
Proposed Site Access Road Plan & Profile (CH420-CH820)	2016021-P-CIV-111	2016021-P-CIV-111	2016021-P-CIV-111 Rev A	2016021-P-CIV-111_FEI2
Proposed Site Access Road Plan & Profile (CH820-CH1240)	2016021-P-CIV-112	2016021-P-CIV-112	2016021-P-CIV-112 Rev A	2016021-P-CIV-112_FEI2
Proposed Site Access Road Plan & Profile (CH1240-CH1560)	2016021-P-CIV-113	2016021-P-CIV-113	2016021-P-CIV-113 Rev A	2016021-P-CIV-113_FEI2
Proposed Site Access Road Plan & Profile (CH1560-CH1865)	2016021-P-CIV-114	2016021-P-CIV-114	2016021-P-CIV-114 Rev A	2016021-P-CIV-114_FEI2
Proposed West-East Pond Access Road Plan & Profile (CH0-CH347)	2016021-P-CIV-115	2016021-P-CIV-115	2016021-P-CIV-115 Rev A	2016021-P-CIV-115_FEI2
Proposed Carpark Layout & Pedestrian Access	2016021-P-CIV-116	2016021-P-CIV-116	2016021-P-CIV-116 Rev A	2016021-P-CIV-116_FEI2
Typical Road Pavement & Culvert Details	2016021-P-CIV-	2016021-P-CIV-117	2016021-P-CIV-117 Rev A	No change

Drawing Title	Drawing Ref	2017 Submission	2019 FEI Submission	2020 FEI2 Submission
	117			
Proposed Pavement Cross Sections Sheet 1 of 2	2016021-P-CIV-118	2016021-P-CIV-118	2016021-P-CIV-118 Rev A	2016021-P-CIV-118_FEI2
Proposed Pavement Cross Sections Sheet 2 of 2	2016021-P-CIV-119	2016021-P-CIV-119	2016021-P-CIV-119 Rev A	2016021-P-CIV-119_FEI2
Proposed Turning Yard at Lenagh Road	2016021-P-CIV-120	2016021-P-CIV-120	No change	No change
Proposed Turning Yard at Lenagh Road Autotrack	2016021-P-CIV-121	n/a	2016021-P-CIV-121 <i>New drawing</i>	No change
Proposed Private Streets Determination Plan Layout	2016021-P-CIV-130	n/a	2016021-P-CIV-130	2016021-P-CIV-130_FEI2
Proposed Private Streets Determination Longsection Sheet 1 of 2	2016021-P-CIV-131	n/a	2016021-P-CIV-131 <i>New drawing</i>	No change
Proposed Private Streets Determination Longsection Sheet 2 of 2	2016021-P-CIV-132	n/a	2016021-P-CIV-132 <i>New drawing</i>	No change
Abandoned Road/Proposed New Road	2016021-P-CIV-170	n/a	2016021-P-CIV-170 <i>New drawing</i>	<i>Removed</i>
Passing Bay Location Plan	2016021-P-CIV-200	2016021-P-CIV-200	No change	No change
Passing Bay No 1 Improvements	2016021-P-CIV-201	2016021-P-CIV-201	No change	No change
Passing Bay No 2 Improvements	2016021-P-CIV-202	2016021-P-CIV-202	No change	No change
Passing Bay No 3 Improvements	2016021-P-CIV-203	2016021-P-CIV-203	No change	No change
Passing Bay No 3A Improvements	2016021-P-CIV-204	2016021-P-CIV-204	No change	No change
Passing Bay No 4 Improvements	2016021-P-CIV-205	2016021-P-CIV-205	No change	No change
Passing Bay No 5 Improvements	2016021-P-CIV-206	2016021-P-CIV-206	No change	No change
Passing Bay No 5A Improvements	2016021-P-CIV-207	2016021-P-CIV-207	No change	No change
Passing Bay No 6 Improvements	2016021-P-CIV-208	2016021-P-CIV-208	No change	No change

Drawing Title	Drawing Ref	2017 Submission	2019 FEI Submission	2020 FEI2 Submission
Passing Bay No 7 Improvements	2016021-P-CIV-209	2016021-P-CIV-209	No change	No change
Passing Bay No 7A Improvements	2016021-P-CIV-210	2016021-P-CIV-210	No change	No change
Passing Bay No 7B Improvements	2016021-P-CIV-211	2016021-P-CIV-211	No change	No change
Passing Bay No 8 Improvements	2016021-P-CIV-212	2016021-P-CIV-212	No change	No change
Passing Bay No 8A Improvements	2016021-P-CIV-213	2016021-P-CIV-213	No change	No change
Passing Bay No 9 Improvements	2016021-P-CIV-214	2016021-P-CIV-214	No change	No change
Passing Bay No 10 Improvements	2016021-P-CIV-215	2016021-P-CIV-215	No change	No change
Passing Bay No 11 Improvements	2016021-P-CIV-216	2016021-P-CIV-216	No change	No change
Passing Bay No 13 Improvements	2016021-P-CIV-217	2016021-P-CIV-217	No change	No change
Passing Bay No 14 Improvements	2016021-P-CIV-218	2016021-P-CIV-218	No change	No change
Passing Bay No 16 Improvements	2016021-P-CIV-219	2016021-P-CIV-219	No change	No change
Passing Bay No 17 Improvements	2016021-P-CIV-220	2016021-P-CIV-220	No change	No change
Passing Bay No 18 Improvements	2016021-P-CIV-221	2016021-P-CIV-221	No change	No change
Passing Bay No 19 Improvements	2016021-P-CIV-222	2016021-P-CIV-222	No change	No change
Passing Bay No 20 Improvements	2016021-P-CIV-223	2016021-P-CIV-223	No change	No change
Passing Bay No 21 Improvements	2016021-P-CIV-224	2016021-P-CIV-224	No change	No change
Camcosy Road Passing Bay Improvement Standard Details	2016021-P-CIV-225	2016021-P-CIV-225	No change	No change
Proposed Storm Drainage Sheet Layout	2016021-P-CIV-	2016021-P-CIV-301	2016021-P-CIV-301 Rev A	2016021-P-CIV-301_FEI2

Drawing Title	Drawing Ref	2017 Submission	2019 FEI Submission	2020 FEI2 Submission
Plan	301			
Proposed Storm Drainage Sheet Layout Sheet 1 of 8	2016021-P-CIV-302	2016021-P-CIV-302	2016021-P-CIV-302 Rev A	2016021-P-CIV-302_FEI2
Proposed Storm Drainage Sheet Layout Sheet 2 of 8	2016021-P-CIV-303	2016021-P-CIV-303	2016021-P-CIV-303 Rev A	2016021-P-CIV-303_FEI2
Proposed Storm Drainage Sheet Layout Sheet 3 of 8	2016021-P-CIV-304	2016021-P-CIV-304	2016021-P-CIV-304 Rev A	2016021-P-CIV-304_FEI2
Proposed Storm Drainage Sheet Layout Sheet 4 of 8	2016021-P-CIV-305	2016021-P-CIV-305	2016021-P-CIV-305 Rev A	2016021-P-CIV-305_FEI2
Proposed Storm Drainage Sheet Layout Sheet 5 of 8	2016021-P-CIV-306	2016021-P-CIV-306	2016021-P-CIV-306 Rev A	2016021-P-CIV-306_FEI2
Proposed Storm Drainage Sheet Layout Sheet 6 of 8	2016021-P-CIV-307	2016021-P-CIV-307	2016021-P-CIV-307 Rev A	2016021-P-CIV-307_FEI2
Proposed Storm Drainage Sheet Layout Sheet 7 of 8	2016021-P-CIV-308	2016021-P-CIV-308	2016021-P-CIV-308 Rev A	2016021-P-CIV-308_FEI2
Proposed Storm Drainage Sheet Layout Sheet 8 of 8	2016021-P-CIV-309	2016021-P-CIV-309	2016021-P-CIV-309 Rev A	2016021-P-CIV-309_FEI2
Proposed Drainage Standard Details	2016021-P-CIV-310	2016021-P-CIV-310	2016021-P-CIV-310 Rev A	No change
Proposed Junction Arrangement Layout	2016021-P-CIV-1050	n/a	n/a	2016021-P-CIV-1050_FEI2 <i>New drawing</i>
Schedule 6 Location Plan	2016021-I-CIV-610	n/a	n/a	2016021-I-CIV-610_FEI2 <i>New drawing</i>
Proposed Culvert Details CU-1	2016021-P-CIV-620	n/a	n/a	2016021-I-CIV-620_FEI2 <i>New drawing</i>
Proposed Culvert Details CU-2	2016021-P-CIV-621	n/a	n/a	2016021-I-CIV-621_FEI2 <i>New drawing</i>
Outfall Headwall Detail	2016021-I-CIV-601	n/a	n/a	2016021-I-CIV-601_FEI2 <i>New drawing</i>
Outfall 1A&1B	2016021-I-CIV-600	n/a	n/a	2016021-I-CIV-600_FEI2 <i>New drawing</i>
Outfall 2, 3 & 4	2016021-I-CIV-602	n/a	n/a	2016021-I-CIV-602_FEI2 <i>New drawing</i>
Outfall 5A&5B	2016021-I-CIV-604	n/a	n/a	2016021-I-CIV-604_FEI2 <i>New drawing</i>
Outfall 6	2016021-I-CIV-606	n/a	n/a	2016021-I-CIV-606_FEI2 <i>New drawing</i>

Table 1.3 Planning Application Drawings (Land Use Consultants)

#	Drawing Title	Drawing Ref	2017 Submission	2019 FEI Submission	2020 FEI2 Submission
118	Removal of Existing Vegetation	LUC-6335-LP-PLN_001	LUC-6335-LP-PLN_001 (Issue C)	LUC-6335-LP-PLN_001 (Issue C)	LUC-6335-LP-PLN_001 (Issue G)
119	Landscape Plan	LUC-6335-LP-PLN_002	LUC-6335-LP-PLN_002 (Issue C)	LUC-6335-LP-PLN_002 (Issue D)	LUC-6335-LP-PLN_002 (Issue H)
120	Restoration Plan	LUC-6335-LP-PLN_003	LUC-6335-LP-PLN_003 (Issue C)	LUC-6335-LP-PLN_003 (Issue A)	LUC-6335-LP-PLN_003 (Issue D)
121	Existing Infrastructure Site Restoration Plan	LUC-6335-LP-PLN_004	n/a	LUC-6335-LP-PLN_004 (Issue B)	No change
n/a	Planting and Maintenance Schedule	n/a	n/a	n/a	To be read in conjunction with Landscape Plan (LUC-6335-LP-PLN_002) and Landscape Restoration Plan (LUC-6335-LP-PLN_003)

FOR INFORMATION PURPOSES ONLY

Conceptual Mine Waste Facility Drawings (see Appendix B3 of Volume 3 of the Second Addendum to the ES (2020 ES Addendum) – Appendix G3 - Mine Waste Facility Technical Design Report drawings)

- Drawing U75-DSF-001: General Arrangement
- Drawing U75-DSF-002: Toe Drain/Starter Embankment Layout
- Drawing U75-DSF-003: Cross Sections
- Drawing U75-DSF-004: Underdrain Layout and Detail
- Drawing U75-DSF-005: Overdrain Layout and Detail

Pond Liners and Underdrain Culverts (see Appendix C4 of Volume 3 of the Second Addendum to the ES (2020 ES Addendum) – page 16)

- Pond Liners and Underdrain Culverts (ref: 2016021-P-CIV-700_FEI_2)

Typical Spillway Detail (see Appendix D2 of Volume 3 of the Second Addendum to the ES (2020 ES Addendum))

- Typical Spillway Detail (ref: 2016021-P-CIV-701_FEI_2)

Table 1.4 Underground Plans (see Appendix B1 of Volume 3 of the First Addendum to the ES (2019 ES Addendum))

#	Figure	Revision from 2017 submission
1	Illustrative Mine Schematic Long Section	Updated
2	Surface Ramp Level Plan	Updated
3	Crosscut Profile 4.5 H and 4.5m W	Updated (previous figure title - <i>Cross Section Capital Cross Cuts Profile</i>)

4	Cut and Fill Ore Development Profile 4.0m H and 4.5m W	Updated (previous figure title - <i>Cross Section Cut and Fill Ore Profile</i>)
5	Remuck/Sump Profile 4.5m H and 4.5m W	Updated (previous figure title - <i>Cross Section Capital Remuck/Sump Profile</i>)
6	Vent Access Profile 4.0m H and 4.0m W	Updated (previous figure title - <i>Cross Section Capital Vent Access Profile</i>)
7	Bulk Explosives Magazine Plan View	Updated (previous figure title - <i>General Arrangement Detonator Magazine</i>)
8	Bulk Explosives Magazine Section View	Updated (previous figure title - <i>General Arrangement Bulk Explosives Magazine</i>)
9	Fuelling Station	No change
10	Refuge and Lunch Station	No change (previous figure title - <i>Lunch room and permanent refuge station</i>)
11	Sump and Booster Pump Station	No change (previous figure title - <i>Cross Section Capital Sump Section & Plan</i>)
12	Ore and Muck Pass Collar	New figure
13	Ventilation Fan Access and Excavation	New figure
14	Sorter Plan View	New figure
15	Sorter Section View	New figure
16	Sorting Station Plant Layout – Section 1-1 and Section B-B Section 2-2 Section C-C Section A-A Axonometric View	New figures
17	Paste Plant Plan View Paste Backfill System – General Layout Overview Paste Backfill System – General Layout Isometric	New figures

Turley Office
Hamilton House
3 Joy Street
Belfast
BT2 8LE

T 028 9072 3900